

DBI

SALA

®

NEW

Fall Arrest
RATED
Anchor Point

Unique
anchor
installs
against door
and
window jambs
in seconds



The world's only anchor for door and window jambs, provides a quick, easy and safe tie-off point for your fall arrest system!

- Fits door or window sizes ranging from 24" to 43" in width for complete jobsite flexibility.
- Non-penetrating design ensures no damage to structure - it is simply compressed between the vertical sides of the door or window - no drilling required!
- Fast and easy installation with built-in adjustment knob - no tools are required!
- Lightweight and extremely portable design weighs only 22 lbs. for easy transport and use.
- Meets OSHA requirements for fall arrest rated anchorages.

Non-Penetrating Design For complete peace-of-mind, this door/window jamb anchor is designed to install without compromising the structure in any way. There is no drilling or welding required, you simply compress the device between the vertical sides of the door or window and tighten.

Fast, Simple and Safe Tie-Off Point This anchor installs quickly and efficiently in three easy steps. First, you adjust the anchor to fit inside the desired opening. Next, you use the built-in "coarse adjustment knob" to tighten and lock into place. Final adjustment is made with the built-in "fine adjustment knob" which firmly seats the anchor against the structure. Complete installation takes only seconds, and you have a safe, fall arrested anchor point to attach your shock absorbing lanyard or self retracting lifeline.

Lightweight and Portable Design This extremely portable and lightweight anchor weighs only 22 lbs. For complete jobsite flexibility, it can be easily moved from one location to another, installed, removed and stored. The portability and ease-of-use increases worker productivity and satisfaction. Typical applications for this anchor include residential and commercial construction, rooftops with door entrances, elevator shafts, wall openings, emergency egress and rescue and more.

Door/Window Jamb Anchor:

2100029: Door/Window Jamb Anchor, adjustable for openings ranging from 24" to 43" wide.



Specifications:

Material: Zinc plated steel anchor and D-ring

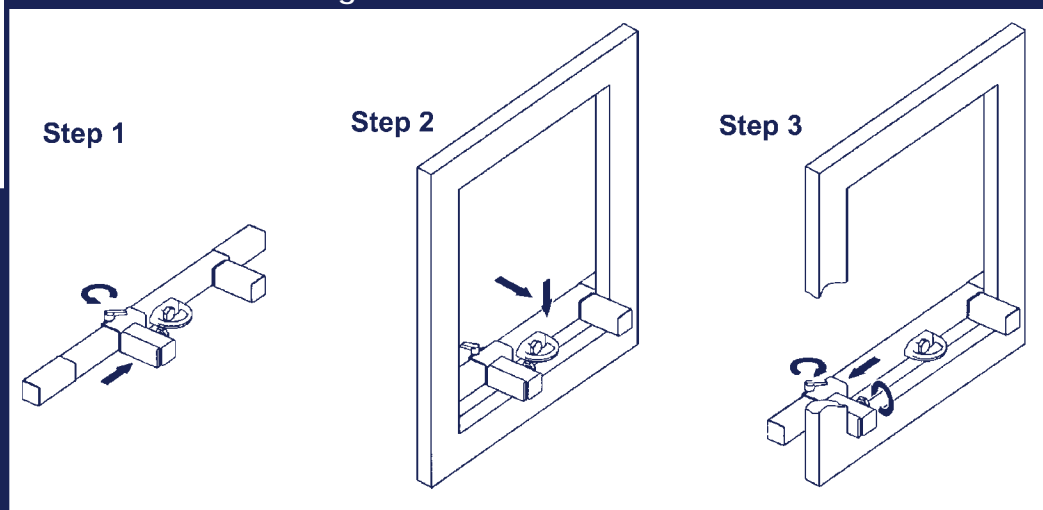
Size: 56.4" length
7.1" width
2.25" thick

Weight: 22 lbs.

Capacity: One user, 310 lbs.

Strength: 3,600 lbs. minimum

Figure 6 of Instruction Manual



ISO 9001 - With a full quality assurance program certified under ISO 9001, DBI/SALA and Protecta supplies the industry with a quality range of safety products to provide added security. That's why we back each of our fall protection and rescue systems with the best training, tech assistance and customer service in the business. It makes life easier for you and safer for your workers.



DBI/SALA & Protecta • 3965 Pepin Avenue Red Wing, MN 55066
Phone: 651-388-8282 • Fax: 651-388-5065
Toll Free US: 800-328-6146 • Toll Free Canada: 800-387-7484
www.dbisala.com • Email:solutions@dbisala.com

Form: 9700097 Rev: A