

 Now with RedStop™ to eliminate mat slippage.



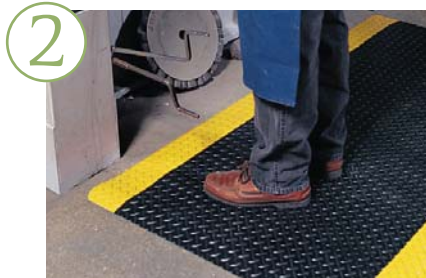
other sizes, colors, & styles available



#479 Cushion Trax®
Safety/Anti-Fatigue Matting (Dry)
 Engineered to meet the toughest requirements of today's industrial applications. Great for multi-shift operations in dry work areas. Durable vinyl diamond-plate top surface is combined with dens closed cell foam base utilizing NoTrax® exclusive UniFusion™ technology. Now with RedStop™.

 black/yellow 2' x 3' **\$74.76** ea
 3' x 5' **\$186.90** ea
 3' x 12' **\$448.56** ea

9/16" thick


#979 Saddle Trax™ - Grande™
Safety/Anti-Fatigue Matting (Dry)
 Thicker, heavier, and stronger - engineered to meet the toughest requirements of today's industrial applications and is particularly suited for multi-shift operations in dry work areas. At a full 1" thick, it is the ultimate anti-fatigue product maximizing worker productivity and comfort. Durable vinyl diamond-plate top surface is combined with dense closed cell foam base utilizing NoTrax® exclusive UniFusion™ technology. Now with RedStop™.

 black/yellow 2' x 3' **\$93.48** ea
 3' x 5' **\$233.70** ea
 3' x 12' **\$560.88** ea


1" thick





#470 Marble Sof-Tyle™
Safety/Anti-Fatigue Matting (Dry)
 Smooth marble-pattern design providing comfort and ergonomic support for dry applications such as lab testing areas, check-out counters, order fulfillment lines, and pharmacies. The durable rubber top surface is combined with a dense closed cell foam base utilizing NoTrax® exclusive UniFusion™ technology virtually eliminating the possibility of de-lamination. Now with RedStop™.

 all colors 2' x 3' **\$79.92** ea
 3' x 5' **\$199.80** ea
 3' x 12' **\$479.52** ea


1/2" thick




#970 Marble Sof-Tyle™ - Grande™
Safety/Anti-Fatigue Matting (Dry)
 1" thick. Provides the ultimate in comfort and ergonomic support for dry applications such as lab testing areas, check-out counters, order fulfillment lines, and pharmacies. The durable rubber top surface is combined with a dense closed cell foam base utilizing NoTrax® exclusive UniFusion™ technology virtually eliminating the possibility of de-lamination. Now with RedStop™.

 black 2' x 3' **\$98.98** ea
 3' x 5' **\$247.20** ea
 3' x 12' **\$593.28** ea

1" thick





#410 Airug®
Safety/Anti-Fatigue Matting (Dry)
 Improved embossed top surface that enhances the mat's slip resistance while providing increased worker fatigue relief. The PVC closed cell foam construction relieves leg and back discomfort while providing a barrier to cold floors. Airug® is intended for applications where basic anti-fatigue relief is required at a low cost.

black 2' x 3' **\$28.68** ea
 3' x 5' **\$71.70** ea
 3' x 12' **\$172.08** ea

3/8" thick



 RedStop™ is a uniquely engineered technology that virtually eliminates the slipping and sliding of all NoTrax® brand laminated floor mats.



other sizes, colors, & styles available

6



#419 Diamond Sof-Tred™ with Dyna-Shield®

Safety/Anti-Fatigue Matting (Dry)

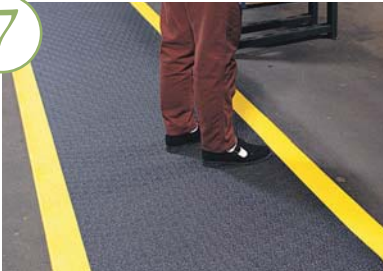
Durable anti-fatigue mat with a non-directional diamond deck plate top surface that allows for sure footing. The NoTrax® exclusive Dyna-Shield® PVC sponge is manufactured with a tough protective top layer that provides long lasting wear. For use in medium duty dry work areas such as labs, packaging stations, and shipping departments.

black/yellow	2' x 3'	\$41.88	ea
	3' x 5'	\$104.70	ea
	3' x 12'	\$251.28	ea

1/2" thick



7



#415 Pebble Step Sof-Tred™ with Dyna-Shield®

Safety/Anti-Fatigue Matting (Dry)

The non-directional pebble embossed top surface is easy to clean and provides excellent traction. The NoTrax® exclusive Dyna-Shield® PVC sponge is manufactured with a tough protective top layer that provides long lasting wear and outperforms the competition in tear resistance and tensile strength. Designed for use in medium duty dry work areas.

black	2' x 3'	\$36.48	ea
	3' x 5'	\$91.20	ea
	3' x 12'	\$218.88	ea

3/8" thick



8



#562 Sanitop®

Safety/Anti-Fatigue Matting – (Wet/Dry)

Sanitop® is made from a durable rubber compound formed with an alternating large and small hole drainage system to keep liquid and debris free from the work area. Designed to withstand harsh chemicals while creating a slip resistant surface, Sanitop® offers a simple, economical solution to almost any industrial or food service application.

black	3' x 5'	\$137.28	ea
	3' x 10'	\$306.04	ea
	3' x 20'	\$630.50	ea



9



#550 Cushion-Ease®

Safety/Anti-Fatigue Matting & Food Service Matting – (Wet)

Cushion-Ease® is a resilient rubber anti-fatigue mat with an anti-slip surface texture and multi-nib backing to further enhance the ergonomic support of the mat. A large hole drainage system facilitates the removal of liquid and debris from the work area and its modular design is compatible with NoTrax® M.D. Ramp System™ for on-site custom configurations.

black	3' x 3'	\$87.48	ea
	3' x 5'	\$145.80	ea



10



#549 Safety Stance®

Safety/Anti-Fatigue Matting – (Wet/Dry)

Grease resistant rubber compound withstands industrial cutting oils and chemicals. Large hole configuration facilitates drainage and resists clogging while mini-diamond studs on top surface minimize slippage.

black / yellow	26" x 40"	\$109.90	ea
	38" x 64"	\$219.60	ea
	38" x 124"	\$427.20	ea

